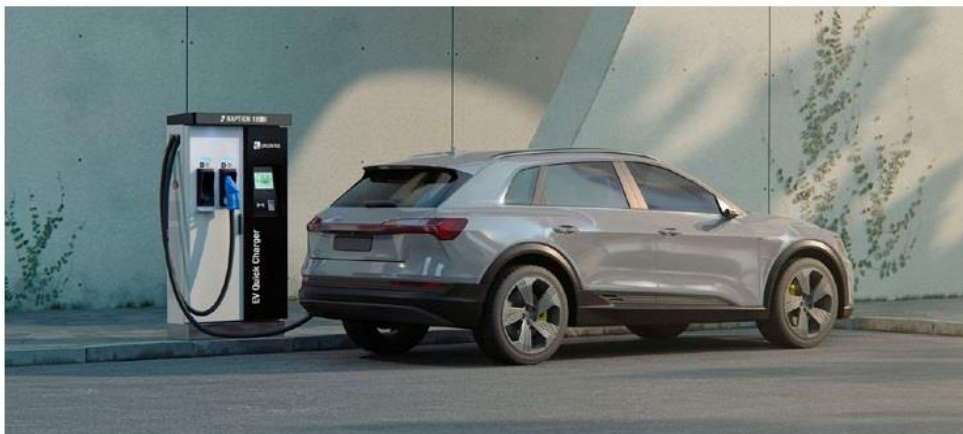
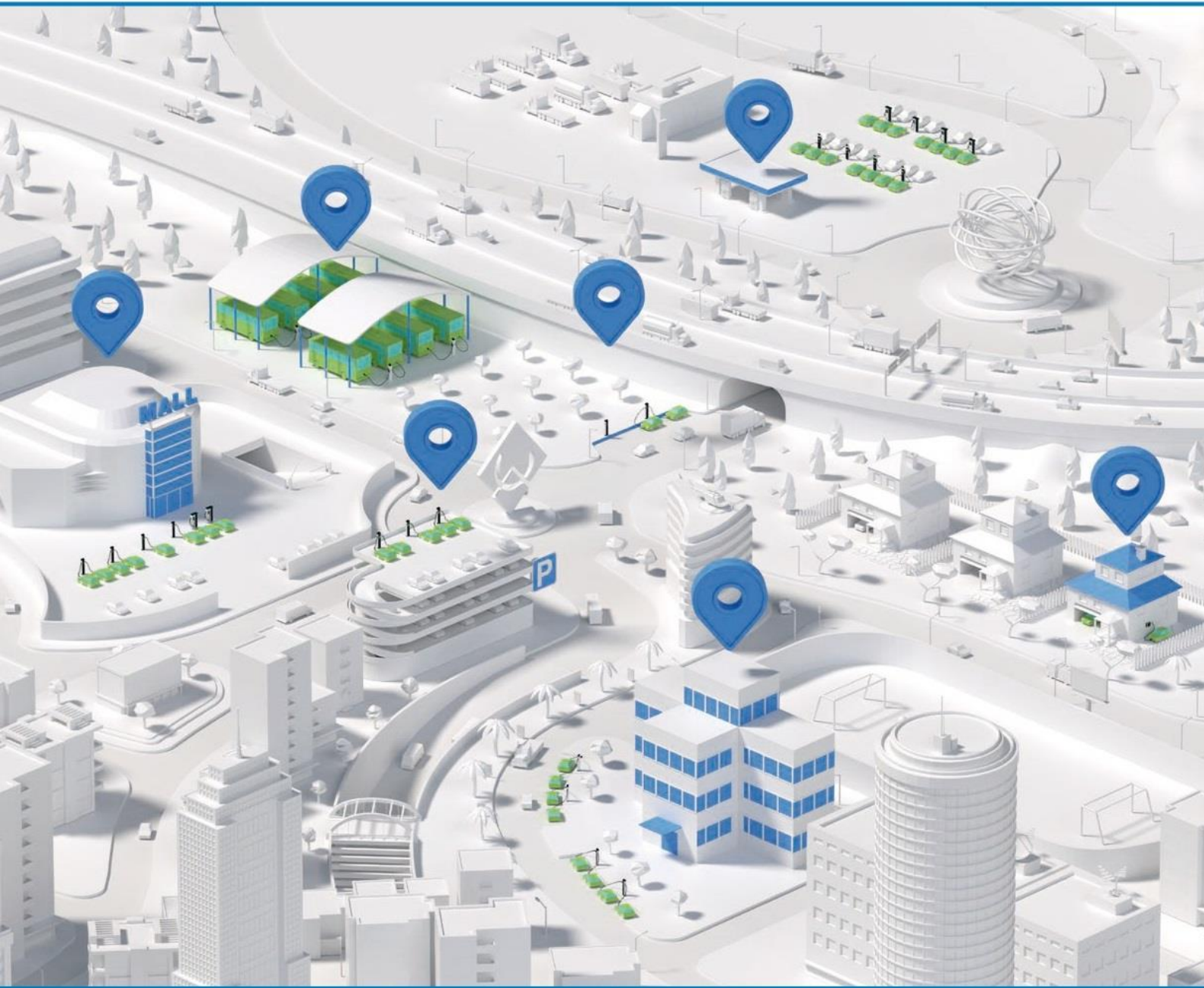


# EV Chargers

*Application by market segments*



## 30KWTECHNICAL SPECIFICATIONS

|                    |                                  |
|--------------------|----------------------------------|
| Mounting Location  | Indoor or Outdoor                |
| Power Output       | 30KW DC Output                   |
| Display            | 7" HMI with touch screen         |
| Charging Current   | 100A Max                         |
| Power Output (Vdc) | 200 - 750 Vdc                    |
| Connector Type     | CCS-2 Female WITH 5 Meters Cable |

### ELECTRICAL PERFORMANCE

|                           |   |
|---------------------------|---|
| Rated Power               | AC 40KVA (3 Phase)  |
| Rated Voltage             | 415V ( $\pm 10\%$ ) AC 3-Phase, 50 / 60 Hz, L1, L2, L3, N PE  |
| THD(i)                    | 5 %   |
| Standby Power Consumption | nom. voltage: 110 - 180 W   |
| Electrical Protection     | Surge protection, Short circuit protection<br>Overload protection, AC overvoltage protection, under-voltage protection,<br>Leakage protection, Insulation Monitoring. |
| Meter                     | Class-1   |
| Grounding Detection       | 30 mA   |
| Conversion Efficiency:    | $\geq 94\%$ (peak)  |
| Power Factor              | $> 0.98$  |

### MECHANICAL SPECIFICATION

|                       |   |
|-----------------------|---|
| Enclosure Type        | Metal   |
| Protection Degree     | IP54  |
| Cooling               | Forced Air (variable speed)                             |
| Operating Temperature | -20°C ~ +60°C   |
| Humidity              | 5%-95%  |
| Altitude              | 2000Mtrs  |
| Warranty              | 1-Year on Major Components                              |
| AMC                   | UP to 5 Years and Extended warranty also we can provide |

## INTERFACE

|                        |  |
|------------------------|--|
| Communication Protocol | OCPP 1.6J remote management            |
| Network connection     | GSM, WIFI, ETHERNET                    |
| User authentication    | Mobile App or RFID card                |
| CMS                    | We Can Provide with Mobile application |

## CERTIFICATION & STANDARDS

|       |   |
|-------|---|
| CODES | IS 17017-1<br>AIS-138 Part1<br>IEC 61851-1<br>IEC 62196-2 |
|-------|---|