

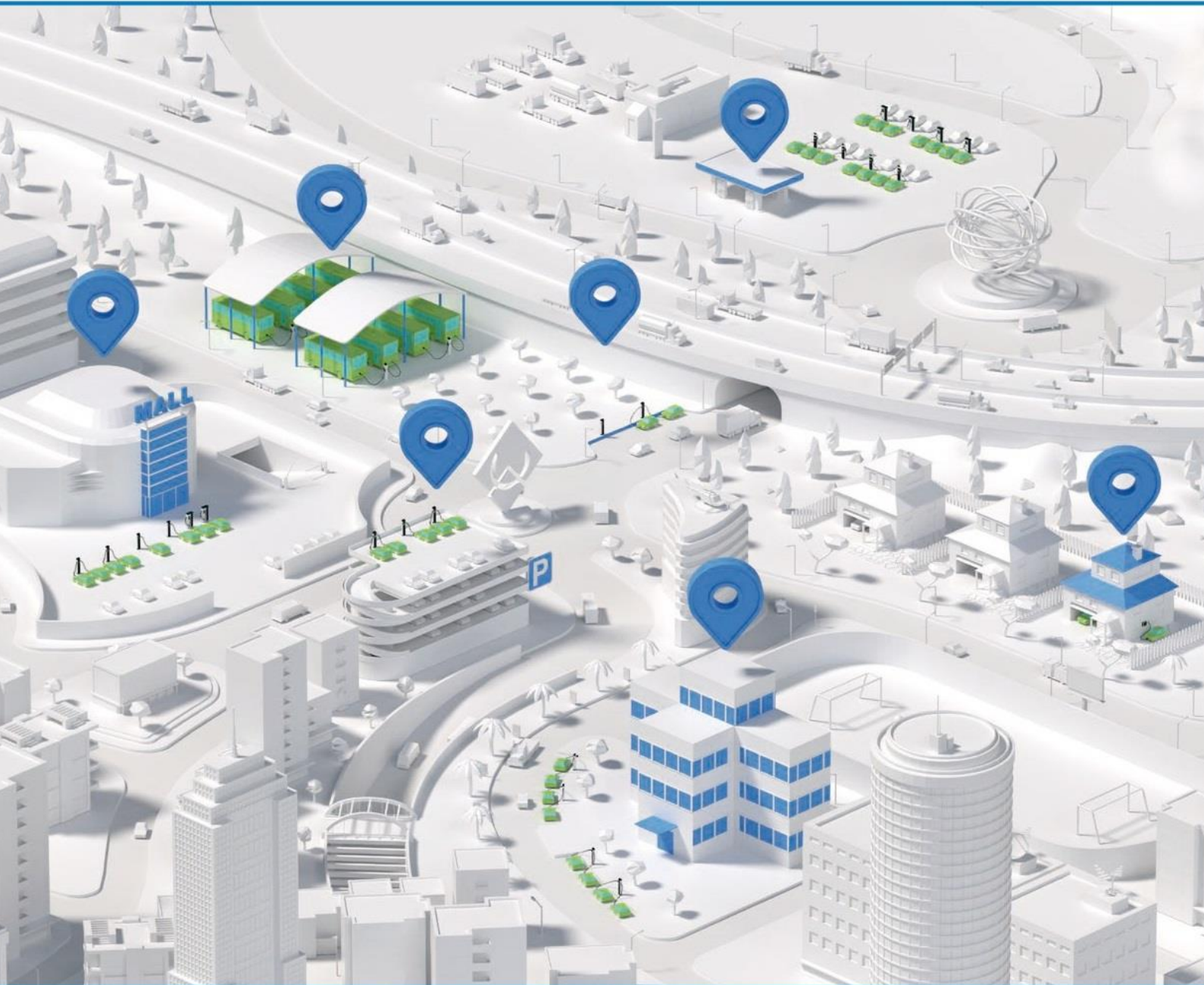
# EV Chargers

Application by market segments



**CHATURA ENERGIES**

GREEN ENERGY SOLUTIONS



# DC FAST CHARGER TECHNICAL SPECIFICATIONS

Mounting Location	Indoor or Outdoor
Power Output	40KW/60KW Dual GUN
Display	7" HMI with touch screen
Charging Current DC(MAX)	100A/200A
Power Output (Vdc)	200 - 1000 Vdc
Connector Type	CCS-2 Female WITH 5 Meters Cable 2 Nos

## ELECTRICAL PERFORMANCE

Rated Power(AC)	50KV/80KVA
Rated Voltage	415V ( $\pm 10\%$ ) AC 3-Phase, 50 / 60 Hz, LI, L2, L3, N PE
THD(i)	5 %
Standby Power Consumption	nom. voltage: 110 - 180 W with Battery
Electrical Protection	Surge Protection, Short Circuit Protection AC Over Current/Short Circuit Protection, Over Voltage & Under-Voltage Protection, Leakage Protection, Insulation Monitoring, Ground Leakage Emergency Push Button. Over Temperature
Meter	AC Energy Meter for Input, DC Energy Meter for Output
Grounding Detection	30 mA
Conversion Efficiency:	$\geq 94\%$ (peak)
Power Factor	$> 0.98$

## MECHANICAL SPECIFICATION

Enclosure Type	Metal
Protection Degree	IP54
Cooling	Forced Air (variable speed)
Operating Temperature	-20°C ~ +60°C
Humidity	5%-95%
Altitude	2000Mtrs
Warranty	1-Year on Major Components*
AMC	UP to 10 Years*

## INTERFACE

Communication Protocol	OCPP 1.6J remote management
Network connection	GSM, WIFI, ETHERNET
User authentication	Mobile App ,RFID card,QR Code
CMS	CE CHARGE/Customer Choice

## CERTIFICATION & STANDARDS

CODES

IS 17017-1  
AIS-138 Part1  
IEC 61851-1  
IEC 62196-2  
IEC 6100-3-12